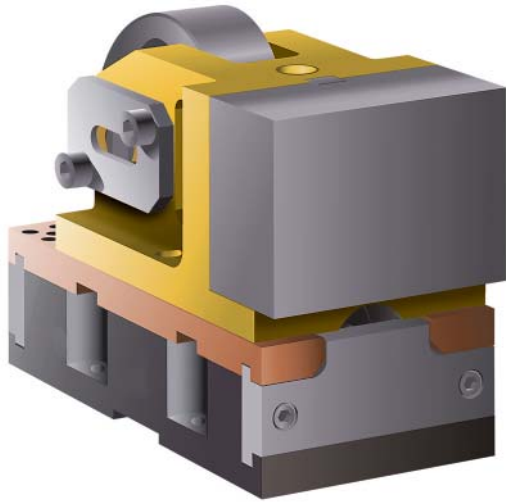
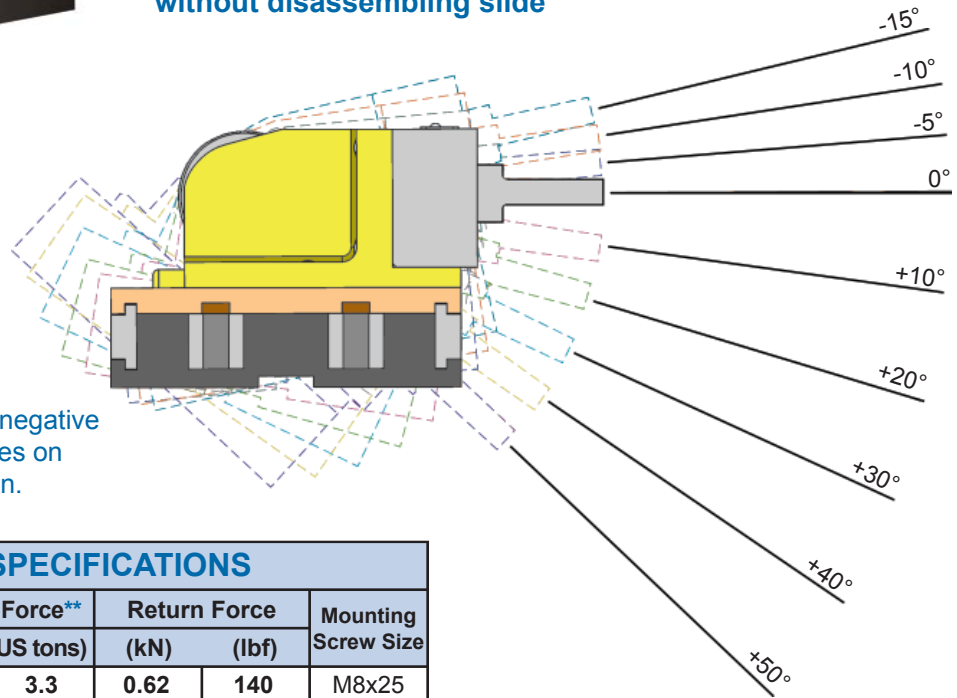


RollerCam

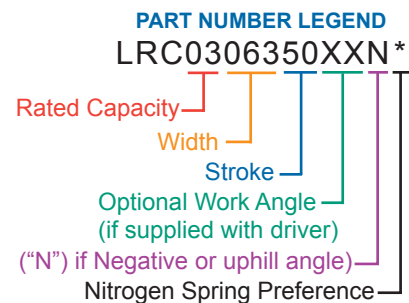


- Designed to function at one million hits plus
- Maintenance-free, Aluminum-Bronze alloy wear surfaces
- Maximum mounting surface on slide face
- Increased slide surfaces
- Interlocking safety systems
- Easy access to Return Spring
- Adaptable to any angle
- Tooling mount plate is readily accessible from the back, without disassembling slide



Most RollerCams can be used in a negative or uphill application. Check the tables on pages 5 and 7 for further information.

ROLLER CAM SPECIFICATIONS						
Basic Part Number Cam Only	Work Stroke (mm)	Maximum Force**		Return Force		Mounting Screw Size
		(kN)	(US tons)	(kN)	(lbf)	
LRC0306350*	50	30	3.3	0.62	140	M8x25
LRC0306375*	75	30	3.3	0.59	133	M8x25
LRC0510050*	50	50	5.6	2.7	614	M8x25
LRC0510075*	75	50	5.6	2.9	662	M8x30
LRC0510095*	95	50	5.6	3.0	668	M8x30
LRC1015050*	50	100	11.2	2.7	614	M10x30
LRC1015075*	75	100	11.2	2.9	662	M10x30
LRC1015095*	95	100	11.2	3.0	668	M10x30
LRC1520050*	50	150	16.9	2.7	614	M12x30
LRC1520075*	75	150	16.9	2.9	662	M12x30
LRC1520095*	95	150	16.9	3.0	668	M12x30

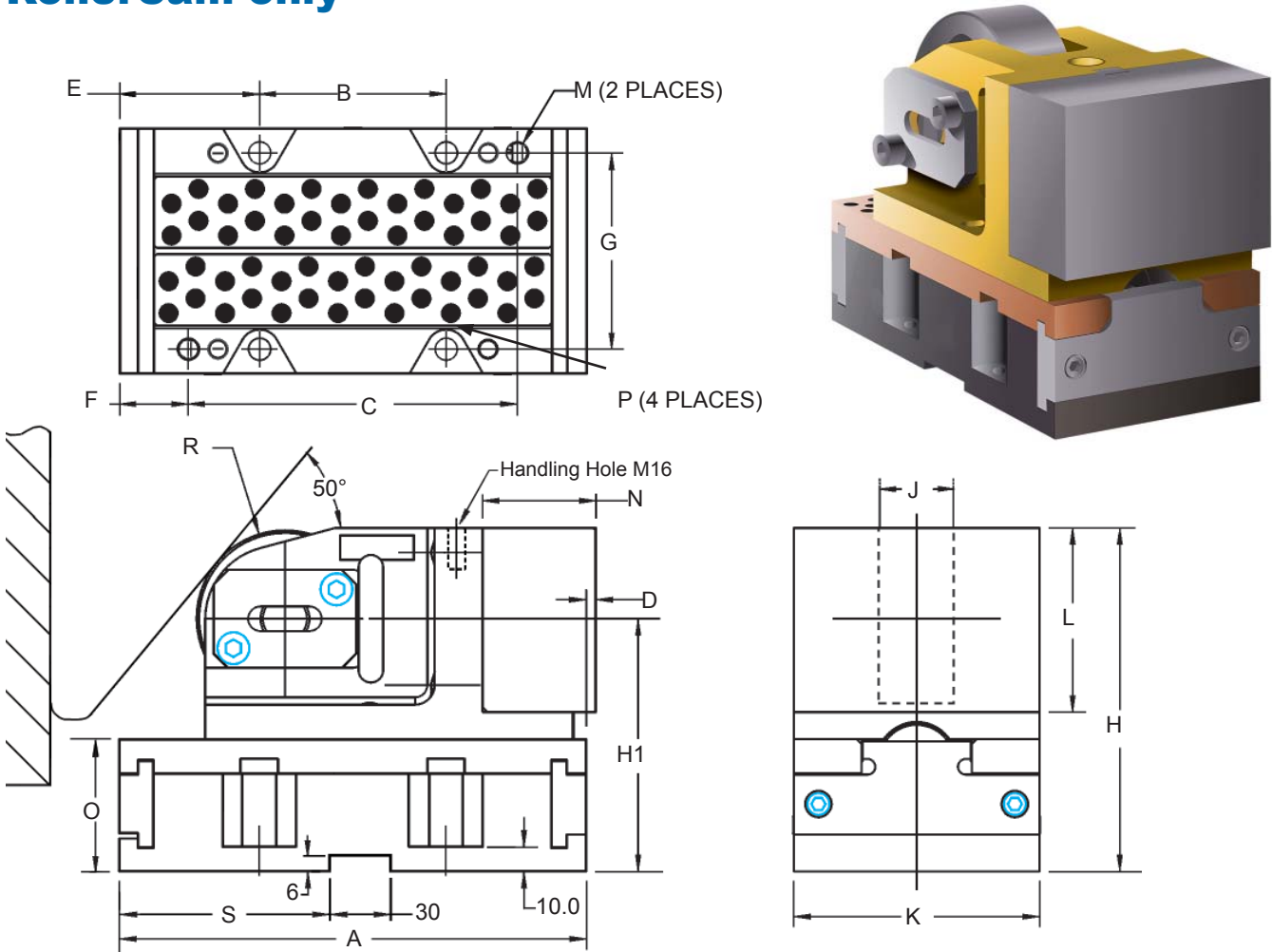


* Select preference for nitrogen gas spring. Dadco = D, Kaller = K
 (Example: LRC0306350D for Dadco preference or LRC0306350K for Kaller preference)

** Maximum force is achieved for centered loading only. Off-center loads can reduce overall capacity.

Patent Pending

RollerCam only



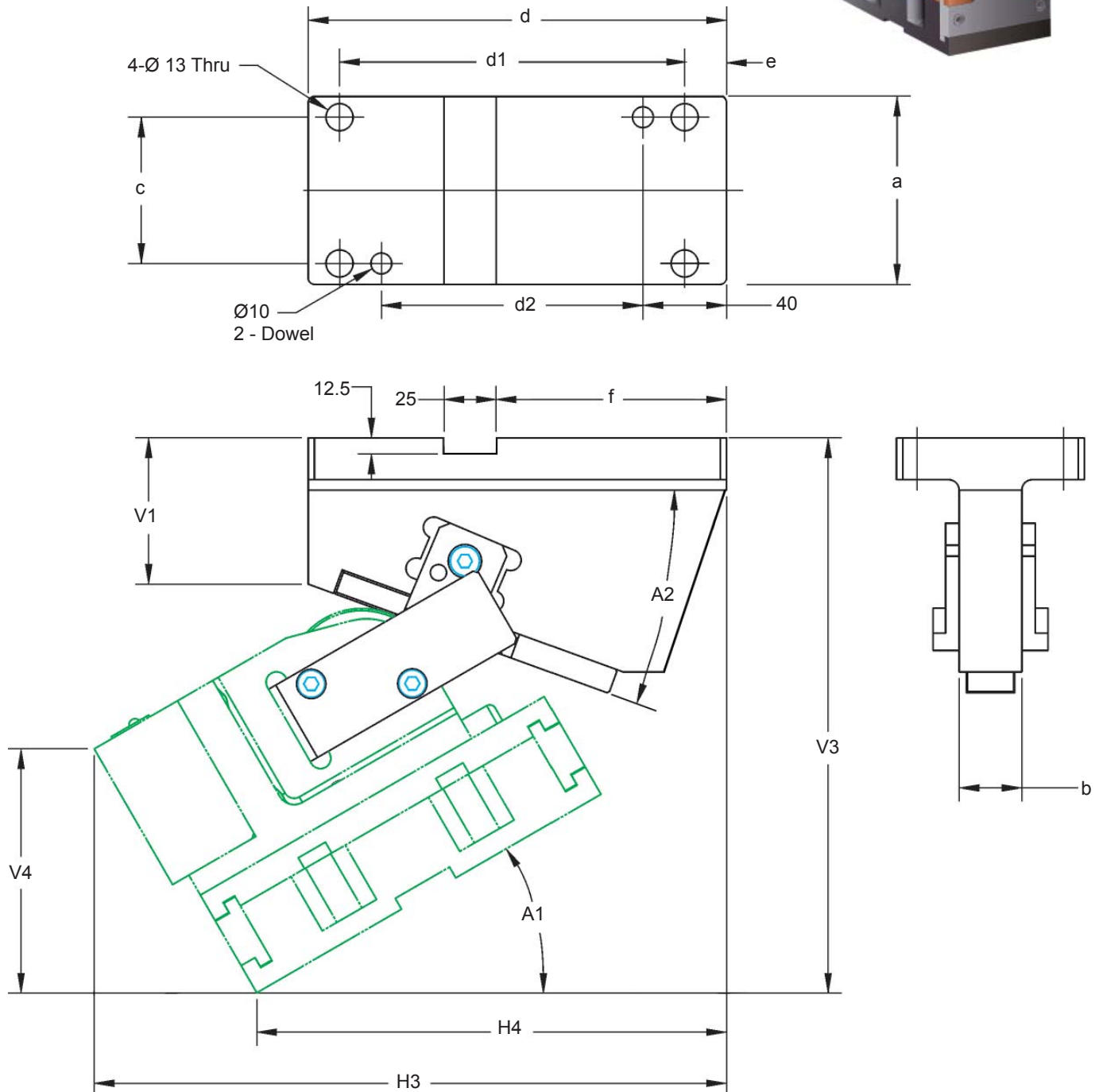
ROLLER CAM DIMENSIONS (all in mm)

PART NUMBER	A	B	C	D	E	F	G	H	H1	J	K	L	M Dowel	N	O	P Screw	R	S
LRC0306350*	190	178	110	4.5	6	40	50	117	85	28	63	63	Ø8	28	48	Ø8	31	75
LRC0306375*	224	210	130	-7	8	47	50	117	85	28	63	63	Ø8	28	48	Ø8	31	75
LRC0510050*	190	76	134	9	57	28	80	140	103	28	100	75	Ø8	46	54	Ø8	36	80
LRC0510075*	224	76	168	0	74	28	80	140	103	28	100	75	Ø8	46	54	Ø8	36	95
LRC0510095*	244	76	188	-5	84	28	80	140	103	28	100	75	Ø8	46	54	Ø8	36	110
LRC1015050*	214	76	154	3	69	30	126	163	124	57	150	90	Ø10	46	64	Ø10	36	90
LRC1015075*	240	76	180	2	82	30	126	163	124	57	150	90	Ø10	46	64	Ø10	36	105
LRC1015095*	260	76	200	2	92	30	126	163	124	57	150	90	Ø10	46	64	Ø10	36	115
LRC1520050*	214	76	154	5	69	30	176	185	140	62	200	110	Ø10	46	67	Ø12	45	90
LRC1520075*	240	76	180	4	82	30	176	185	140	62	200	110	Ø10	46	67	Ø12	45	105
LRC1520095*	260	76	200	4	92	30	176	185	140	62	200	110	Ø10	46	67	Ø12	45	115

* Select preference for nitrogen gas spring. Dadco = D, Kaller = K
 (Example: LRC0306350D for Dadco preference or
 LRC0306350K for Kaller preference)

RollerCam with Driver and Positive Return 3 and 5 Metric Ton Capacities

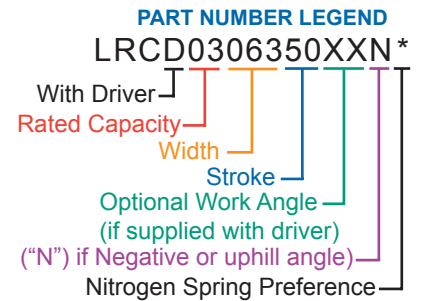
*For special driver angles
contact Lamina Customer Service 800-652-6462.*



RollerCam with Driver and Positive Return 3 and 5 Metric Ton Capacities

Lamina takes the guesswork out of designing the correct driver to use with your Roller Cam.

See the dimensions below for a Lamina-designed driver for your application.

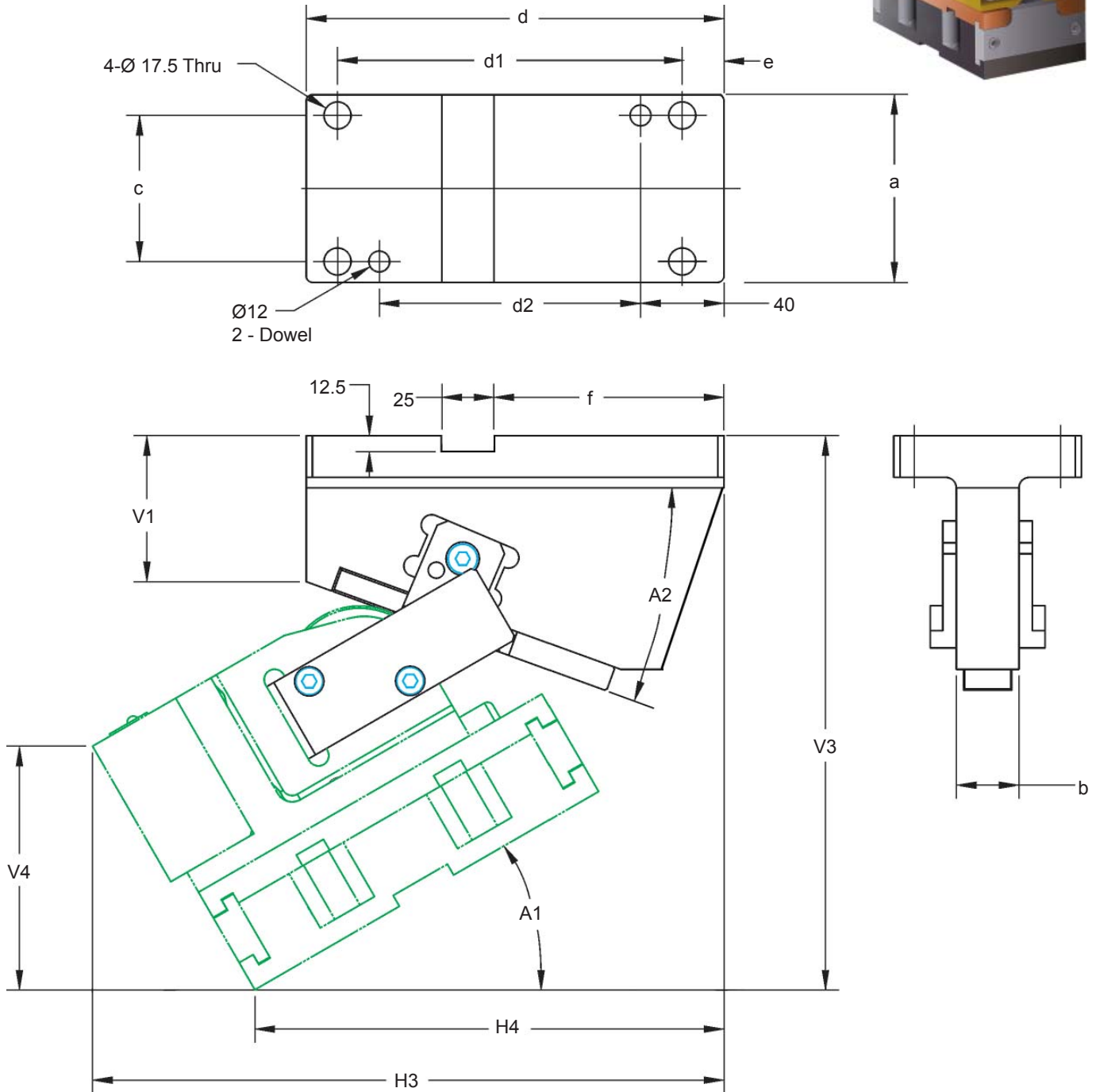


* Select preference for nitrogen gas spring. Dadco = D, Kaller = K
(Example: LRC0306350D for Dadco preference or LRC0306350K for Kaller preference)

RollerCam with Driver and Positive Return																
	PART NUMBER	A1	A2	V3	V4	H3	H4	V1	a	b	c	d	d1	d2	e	f
THREE TONS	LRC030635015N*	-15°	65	132.2	114.2	284.6	310.5	42.1	90	30	70	180	145	105	20	110
	LRC030635010N*	-10°	60	146.3	116.0	285.2	301.1	43.1								
	LRC030635005N*	-5°	55	160.8	117.0	283.6	289.3	44.4								
	LRC030635000*	0°	50	170.8	117.0	274.5	270.0	40.0								
	LRC030635010*	10°	40	203.5	114.5	271.9	247.1	60.0								
	LRC030635020*	20°	30	214.5	108.4	262.8	218.5	60.0								
	LRC030635030*	30°	20	237.6	99.0	256.9	194.5	80.0								
	LRC030635040*	40°	10	248.0	86.8	244.2	165.5	90.0								
	LRC030635050*	50°	0	268.0	71.7	214.6	122.1	115.0	90	30	70	180	150	100	15	90
	LRC030637500*	0°	50	177.9	117.0	277.0	284.0	50.0	90	30	70	180	145	105	20	110
	LRC030637510*	10°	40	199.5	116.5	279.0	265.6	60.0								
	LRC030637520*	20°	30	214.9	112.4	268.9	235.5	60.0								
	LRC030637530*	30°	20	233.5	104.8	256.4	204.0	70.0								
	LRC030637540*	40°	10	255.8	94.1	241.4	171.6	90.0								
LRC030637550*	50°	0	276.9	80.6	239.1	154.0	115.0	90								
FIVE TONS	LRC051005015N*	-15°	65	147.7	137.5	319.0	346.5	42.1	90	30	70	180	145	105	20	110
	LRC051005010N*	-10°	60	165.8	139.5	319.7	335.1	43.1								
	LRC051005005N*	-5°	55	186.2	140.2	316.0	319.3	44.4								
	LRC051005000*	0°	50	206.0	140.0	329.0	320.0	50.0	90	30	70	200	165	125	20	130
	LRC051005010*	10°	40	236.2	136.3	310.3	277.1	50.0								
	LRC051005020*	20°	30	259.7	128.5	294.9	238.5	60.0								
	LRC051005030*	30°	20	272.9	116.7	282.3	204.5	70.0								
	LRC051005040*	40°	10	287.7	101.4	282.4	185.5	90.0								
	LRC051005050*	50°	0	307.2	83.1	245.2	132.1	115.0								
	LRC051007500*	0°	50	194.1	140.0	339.0	339.0	46.1	90	30	70	200	165	125	20	130
	LRC051007510*	10°	40	221.3	137.9	329.9	305.6	50.0								
	LRC051007520*	20°	30	249.2	131.5	318.4	270.5	60.0								
	LRC051007530*	30°	20	275.0	121.2	389.0	219.0	70.0								
	LRC051007540*	40°	10	281.9	107.2	291.6	201.6	80.0								
	LRC051007550*	50°	0	314.1	90.0	261.2	154.0	115.0								
	LRC051009500*	0°	50	195.1	140.0	334.0	339.0	45.0	90	30	70	200	165	125	20	130
	LRC051009510*	10°	40	231.6	138.8	324.7	305.3	55.0								
	LRC051009520*	20°	30	248.6	133.3	322.5	279.3	60.0								
LRC051009530*	30°	20	270.9	123.7	307.0	241.3	70.0									
LRC051009540*	40°	10	294.9	110.5	293.1	206.9	90.0									
LRC051009550*	50°	0	317.9	93.8	270.9	166.8	115.0	90								

RollerCam with Driver and Positive Return 10 and 15 Metric Ton Capacities

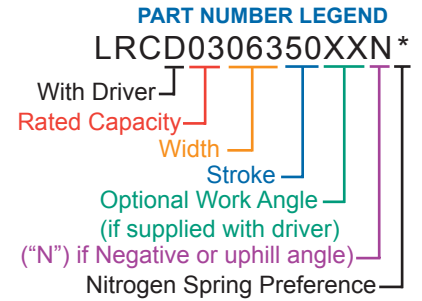
*For special driver angles
contact Lamina Customer Service 800-652-6462.*



RollerCam with Driver and Positive Return 10 and 15 Metric Ton Capacities

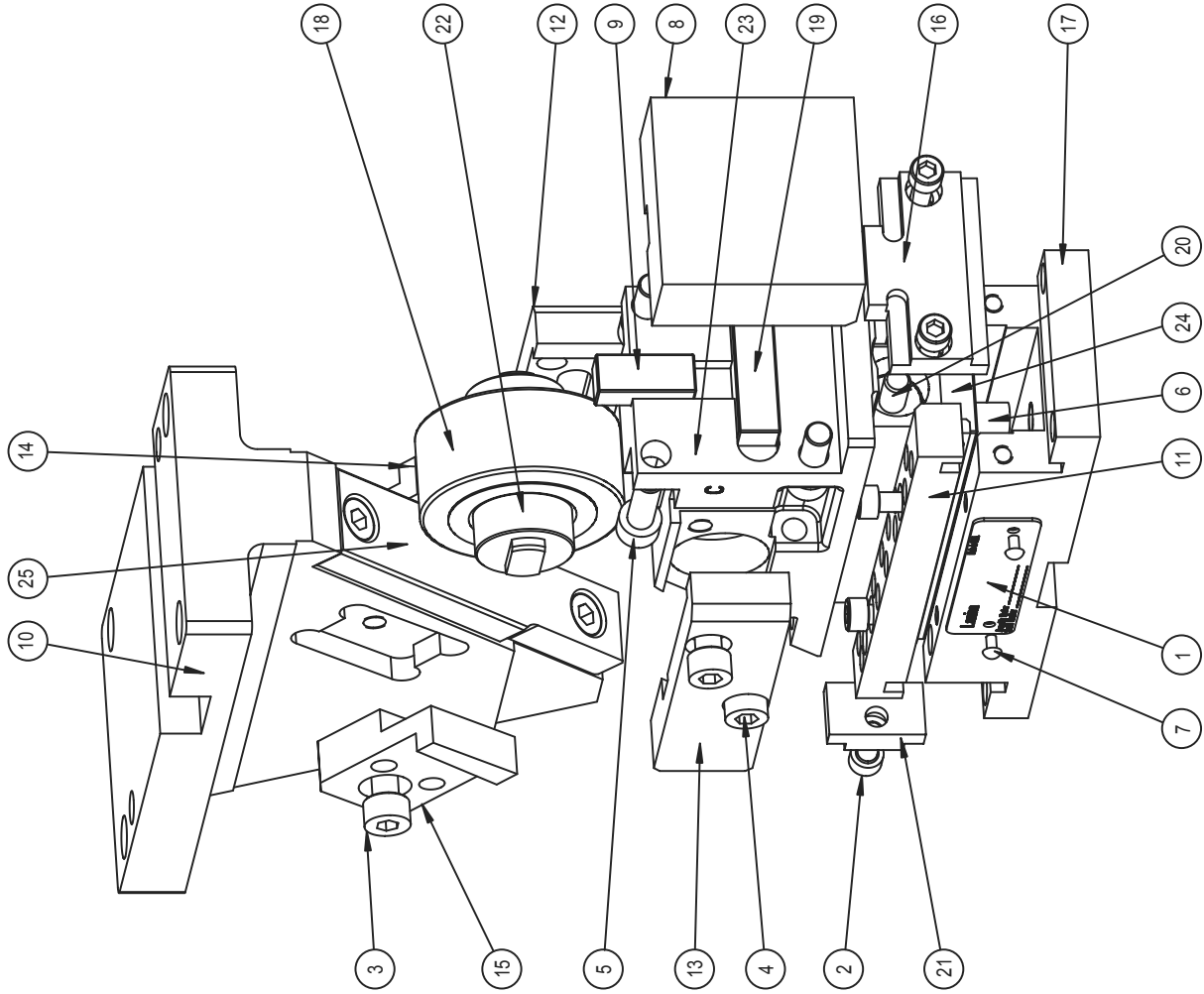
Lamina takes the guesswork out of designing the correct driver to use with your Roller Cam.

See the dimensions below for a Lamina-designed driver for your application.



* Select preference for nitrogen gas spring. Dadco = D, Kaller = K
(Example: LRC0306350D for Dadco preference or LRC0306350K for Kaller preference)

RollerCam with Driver and Positive Return																
	PART NUMBER	A1	A2	V3	V4	H3	H4	V1	a	b	c	d	d1	d2	e	f
TEN TONS	LRCD101505015N*	-15°	65	158.4	158.2	357.4	396.7	25.5	140	64	110	200	165	125	20	130
	LRCD101505010N*	-10°	60	185.1	161.0	355.4	380.8	31.5								
	LRCD101505005N*	-5°	55	207.7	162.7	352.0	363.2	44.4								
	LRCD101505000*	0°	50	217.0	163.0	347.0	344.0	40.0								
	LRCD101505010*	10°	40	249.6	160.0	342.0	310.7	50.0								
	LRCD101505020*	20°	30	277.7	152.1	329.7	271.1	60.0								
	LRCD101505030*	30°	20	305.6	139.6	319.4	235.3	80.0								
	LRCD101505040*	40°	10	318.6	122.9	301.0	193.9	90.0								
	LRCD101505050*	50°	0	339.1	102.5	274.4	147.6	115.0	140	64	110	200	170	120	15	110
	LRCD101507500*	0°	50	221.1	163.0	352.0	350.0	50.0	140	64	110	200	165	125	20	130
	LRCD101507510*	10°	40	245.9	160.2	346.6	316.4	50.0								
	LRCD101507520*	20°	30	276.0	152.5	333.2	275.5	60.0								
	LRCD101507530*	30°	20	305.5	140.1	321.1	237.8	80.0								
	LRCD101507540*	40°	10	329.4	123.6	300.2	193.9	100.0								
	LRCD101507550*	50°	0	339.9	103.3	290.4	164.3	115.0								
	LRCD101509500*	0°	50	209.2	163.0	362.0	360.0	50.0	140	64	110	200	165	125	20	130
	LRCD101509510*	10°	40	246.2	160.2	346.3	316.1	50.0								
	LRCD101509520*	20°	30	271.0	152.5	342.0	284.3	60.0								
LRCD101509530*	30°	20	302.9	140.2	328.4	245.2	80.0									
LRCD101509540*	40°	10	317.6	123.6	310.5	204.2	90.0									
LRCD101509550*	50°	0	339.9	103.3	293.3	167.1	115.0	140								
FIFTEEN TONS	LRCD152005015N*	-15°	65	182.6	180.0	363.7	406.7	25.5	140	64	110	200	165	125	20	130
	LRCD152005010N*	-10°	60	206.4	183.1	363.6	390.8	31.5								
	LRCD152005005N*	-5°	55	227.0	184.7	362.0	373.2	44.4								
	LRCD152005000*	0°	50	235.1	185.0	359.0	354.0	40.0								
	LRCD152005010*	10°	40	266.4	181.3	357.8	320.7	50.0								
	LRCD152005020*	20°	30	294.2	172.1	349.1	281.1	60.0								
	LRCD152005030*	30°	20	326.1	157.7	332.2	235.3	80.0								
	LRCD152005040*	40°	10	338.2	138.5	316.7	193.9	90.0								
	LRCD152005050*	50°	0	358.4	115.1	282.5	137.6	115.0	140	64	110	200	170	120	15	110
	LRCD152007500*	0°	50	239.2	185.0	364.0	360.0	50.0	140	64	110	200	165	125	20	130
	LRCD152007510*	10°	40	262.7	181.5	362.4	326.4	50.0								
	LRCD152007520*	20°	30	298.3	172.5	342.6	275.5	60.0								
	LRCD152007530*	30°	20	326.0	158.2	333.8	237.8	80.0								
	LRCD152007540*	40°	10	349.0	139.2	315.8	193.9	100.0								
	LRCD152007550*	50°	0	359.2	115.9	298.6	154.3	115.0								
	LRCD152009500*	0°	50	239.2	185.0	364.0	360.0	50.0	140	64	110	200	165	125	20	130
	LRCD152009510*	10°	40	271.3	183.3	352.1	316.1	50.0								
	LRCD152009520*	20°	30	293.2	172.4	351.4	284.3	60.0								
LRCD152009530*	30°	20	323.4	158.2	341.1	245.2	80.0									
LRCD152009540*	40°	10	338.1	139.2	321.2	199.2	90.0									
LRCD152009550*	50°	0	359.2	115.9	311.4	167.1	115.0	140								



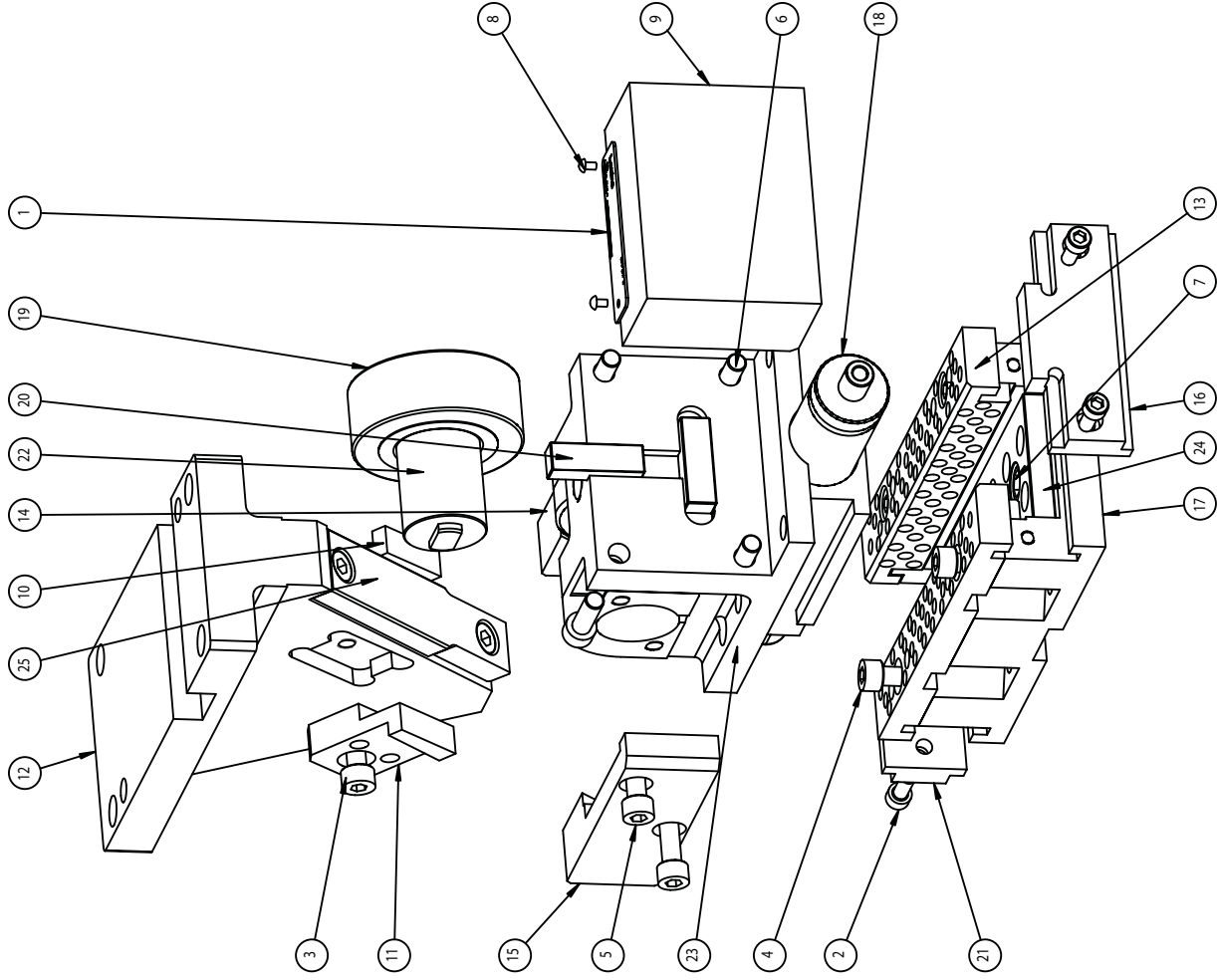
COMPONENT PARTS

ITEM NO.	PART NAME	PURCH.	QTY.	DESCRIPTION
1	27IDTAG50	*	1	ID TAG 50mm
2	F010609	*	8	M6 X 1.0 X 16 SHCS
3	F010808	*	2	SHCS M8x1.25x12
4	F010809	*	6	SHCS M8x1.25x16
5	F010811	*	4	SHCS M8x1.25 x25
6	F021009	*	2	LHCS M10x1.5x16
7	FITS187	*	2	DRIVE SCREW #4 x 3/16 SS
8	FACEBLOCK63		1	ROLLER CAM TOOL MOUNT FACE
9	KEY101230		1	KEY 10 X 12.7 X 30mm
10	LRC063050D00		1	ROLLER CAM DRIVER
11	LRC06350WP		2	WEAR PLATE ROLLER CAM
12	LRC063POA		1	POS. RETURN BKT A
13	LRC063POB		1	POS. RETURN BKT B
14	LRC08100PKA		1	POS. RETURN KEY A
15	LRC08100PKB		1	POS. RETURN KEY B
16	LRCFTPL63		1	ROLLER CAM FRONT PLATE
17	MB063050A		1	ROLLER CAM BODY
18	MCYR30SX	*	1	McGILL METRIC CAMROL BEARING
19	NCM050003		1	KEY 10 X 12.7 X 40mm
20	(SEE PAGE 12)		1	GAS SPRING
21	RC063EDPL		2	END PLATE, ROLLER CAM
22	RCPIN63		1	ROLLER PIN 100 ROLLER CAM
23	SLM063050A		1	63 SERIES SLIDE, MACHINED
24	WCC1034140		1	10mm B/LWP
25	WCS120017		1	STEEL WEAR PLATE

NOTE:
APPLY LOCTITE #242 REMOVABLE THREADLOCKER OR EQUIVALENT
ON ALL FASTENERS USED TO RETAIN WEAR PLATES.

THIS IS A CUSTOM FIT CAM, COMPONENTS NOT INTERCHANGEABLE.

See page 12 for notes on nitrogen spring selection.



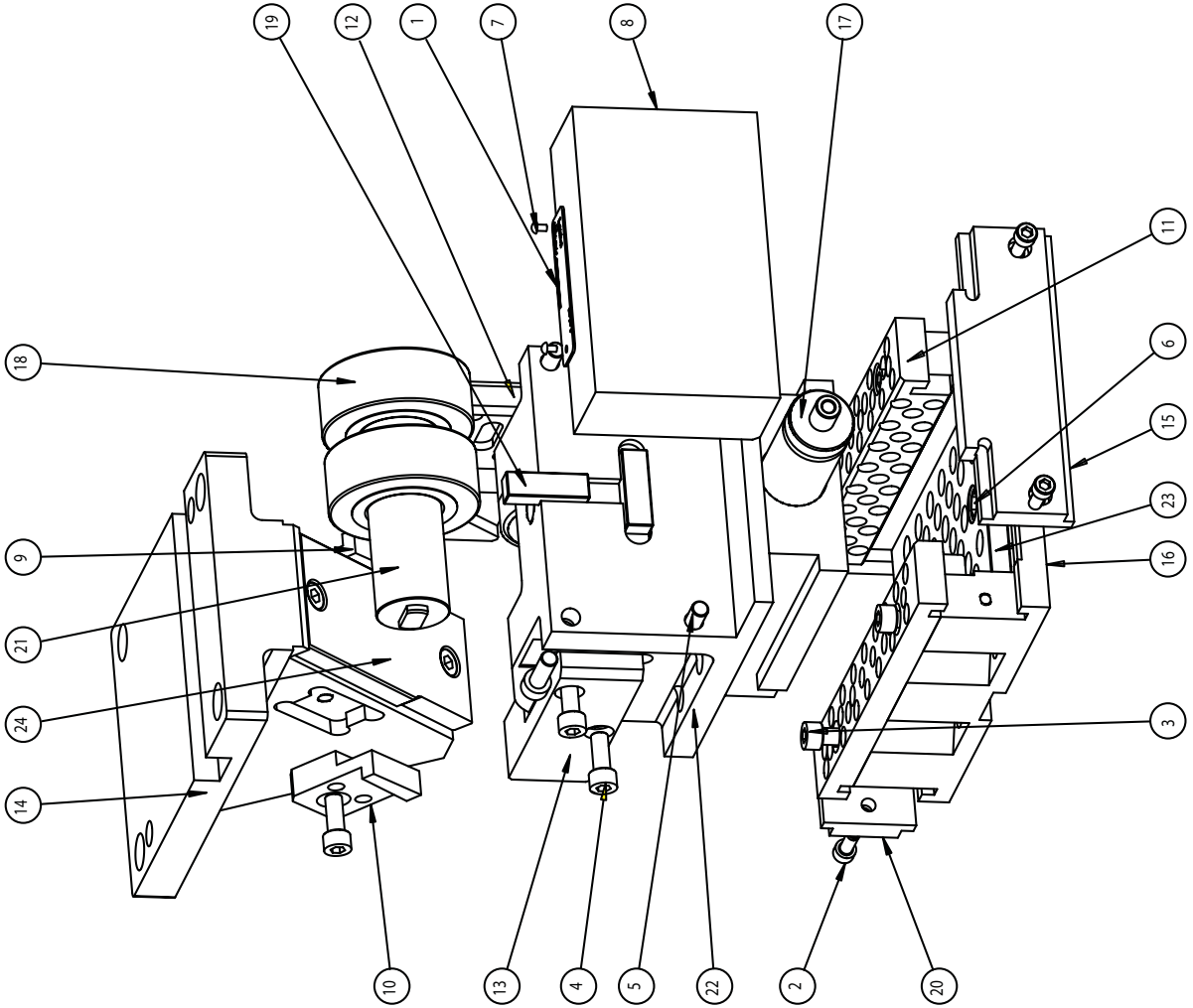
COMPONENT PARTS

ITEM NO.	PART NAME	PURCH.	QTY.	DESCRIPTION
1	27IDTAG50	*	1	ID TAG 50mm
2	F010609	*	4	M6 X 1.0 X 16SHCS
3	F010808	*	2	SHCS M8x1.25x12
4	F010809	*	6	SHCS M8x1.25x16
5	F010810	*	4	SHCS M8x1.25x20
6	F010811	*	4	SHCS M8x1.25 x25
7	F021009	*	2	LHCS M10x1.5x16
8	F1TS187	*	2	DRIVE SCREW #4 x3/16SS
9	FACEBLOCK100		1	ROLLER CAM TOOL MOUNT FACE
10	LRC08100PKA		1	POS. RETURN KEY A
11	LRC08100PKB		1	POS. RETURN KEY B
12	LRC100050D00		1	ROLLER CAM DRIVER
13	LRC10050WP		2	WEAR PLATE ROLLER CAM
14	LRC100POA		1	POS. RETURN BKT A
15	LRC100POB		1	POS. RETURN BKT B
16	LRCFTPL100		1	ROLLER CAM FRONT PLATE
17	MB100050A		1	ROLLER CAM BODY
18	(SEE PAGE 12)	*	1	GAS SPRING
19	MCVR35SX	*	1	McGILL METRIC CAMROL. BEARING
20	NCM050003		2	KEY 10 X 12.7 X 40mm
21	RC100EDPL		2	END PLATE ROLLER CAM
22	RCPIN100		1	ROLLER PIN 100 ROLLER CAM
23	SLM100050A		1	MACHINED SLIDE
24	WCC1060150		1	10mm B/L WP
25	WCS120017		1	STEEL WEAR PLATE

NOTE:
 APPLY LOCTITE #242 REMOVABLE THREADLOCKER OR EQUIVALENT
 ON ALL FASTENERS USED TO RETAIN WEAR PLATES.

THIS IS A CUSTOM FIT CAM, COMPONENTS NOT INTERCHANGEABLE.

See page 12 for notes on nitrogen spring selection.



COMPONENT PARTS

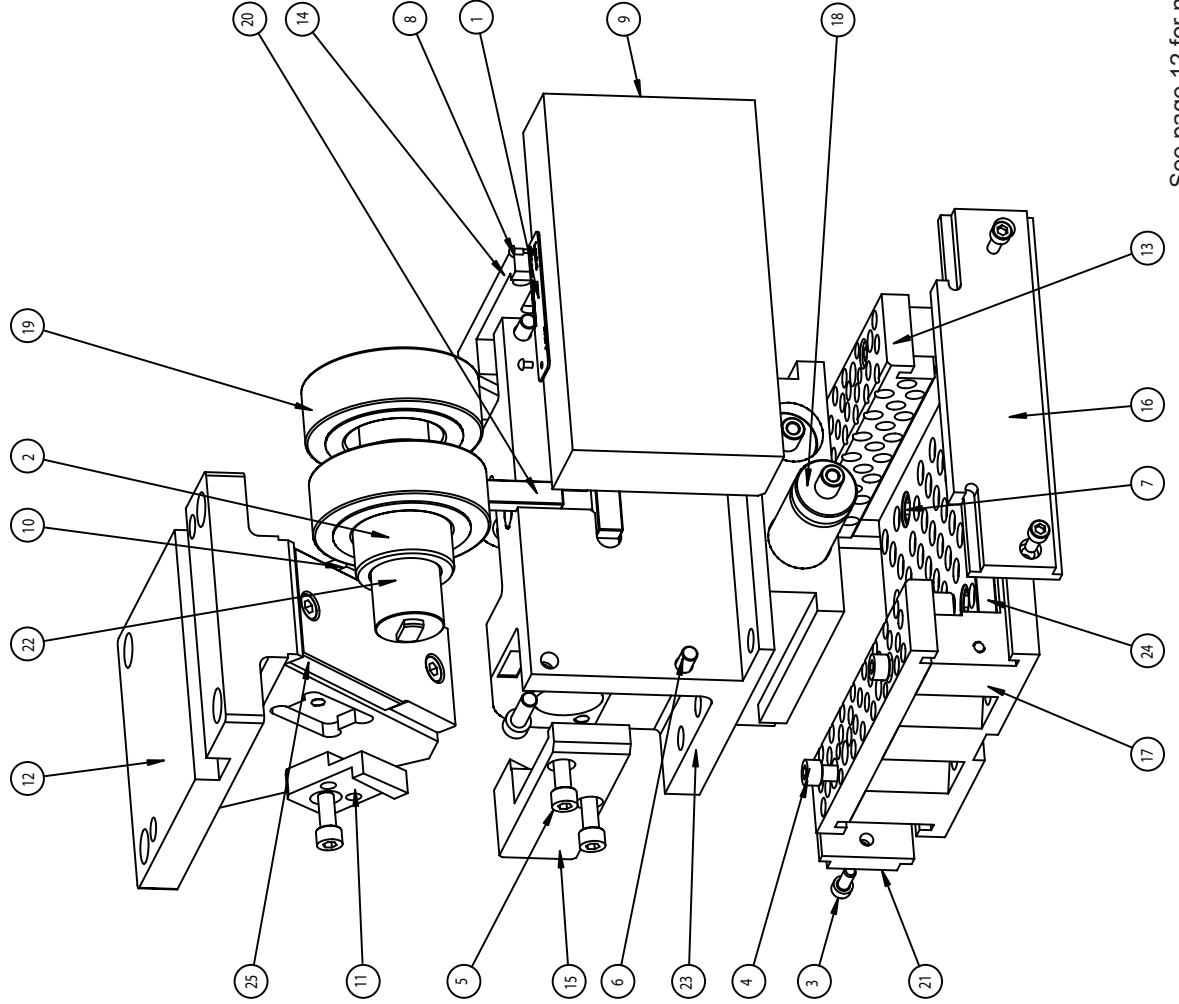
ITEM NO.	PART NAME	PURCH.	QTY.	DESCRIPTION
1	27IDTAG50	*	1	IDTAG 50mm
2	F010609	*	4	M6 X 1.0 X 16 SHCS
3	F010809	*	6	SHCS M8 X 1.25 X 16
4	F010810	*	6	SHCS M8 X 1.25 X 20
5	F010811	*	4	SHCS M8 X 1.25 X 25
6	F021009	*	2	LHCS M10 X 1.5 X 16
7	F1TS187	*	2	DRIVE SCREW #4 X 3/16 SS
8	FACEBLOCK150		1	ROLLER CAM TOOL MOUNT FACE
9	LRC08100PKA		1	POS. RETURN KEY A
10	LRC08100PKB		1	POS. RETURN KEY B
11	LRC15050WP		2	WEAR PLATE ROLLER CAM
12	LRC150POA		1	POS. RETURN BKT A
13	LRC150POB		1	POS. RETURN BKT B
14	LRC200050D00		1	ROLLER CAM DRIVER
15	LRCFTPL150		1	ROLLER CAM FRONT PLATE
16	MB150050A		1	ROLLER CAM BODY
17	(SEE PAGE 12)	*	1	GAS SPRING
18	MCYR355X	*	2	MCGILL METRIC CAMROL BEARING
19	NCM050003		2	KEY 10 X 12.7 X 40mm
20	RCT150EDPL		2	END PLATE ROLLER CAM
21	RPCIN150		1	ROLLER PIN 100 ROLLER CAM
22	SLM150050A		1	MACHINED SLIDE
23	WCC10100180		1	10mm B/LWP
24	WCS120021		1	STEEL WEAR PLATE

NOTE:

APPLY LOCTITE #242 REMOVABLE THREADLOCKER OR EQUIVALENT ON ALL FASTENERS USED TO RETAIN WEAR PLATES.

THIS IS A CUSTOM FIT CAM, COMPONENTS NOT INTERCHANGEABLE.

See page 12 for notes on nitrogen spring selection.



COMPONENT PARTS

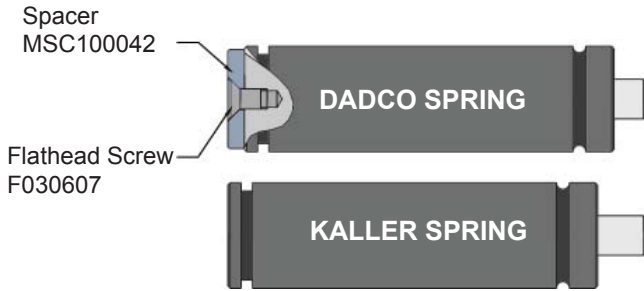
ITEM NO.	PART NAME	PURCH.	QTY.	DESCRIPTION
1	271DTAG50	*	1	ID TAG 50mm
2	BUSHING200		1	BUSHING, ROLLER CAM
3	F010609	*	4	M6 X 1.0 X 16 SHCS
4	F010809	*	6	SHCS M8x1.25x16
5	F010810	*	6	SHCS M8x1.25x20
6	F010811	*	4	SHCS M8x1.25 x25
7	F021009	*	4	LHCS M10x1.5x16
8	F1T5187	*	2	DRIVE SCREW #4 x 3/16 SS
9	FACEBLOCK200		1	ROLLER CAM TOOL MOUNT FACE
10	LRC08100PKA		1	POS. RETURN KEY A
11	LRC08100PKB		1	POS. RETURN KEY B
12	LRC200050D00		1	ROLLER CAM DRIVER
13	LRC20050WP		2	WEAR PLATE ROLLER CAM
14	LRC200POA		1	POS. RETURN BKT A
15	LRC200POB		1	POS. RETURN BKT B
16	LRCFTPL200		1	ROLLER CAM FRONT PLATE
17	MB200050A		1	ROLLER CAM BODY
18	(SEE PAGE 12)	*	2	GAS SPRING
19	MCYR50SX	*	2	McGILL METRIC CAMROL BEARING
20	NCM050003		2	KEY 10 X 12.7 X 40mm
21	RC200EDPL		2	END PLATE, ROLLER CAM
22	RCPIN200		1	ROLLER PIN 100 ROLLER CAM
23	SLM200050A		1	MACHINED SLIDE
24	WCC10140180		1	10mm B/L WP
25	WCS120021		1	STEEL WEAR PLATE

NOTE:
 APPLY LOCTITE #242 REMOVABLE THREADLOCKER OR EQUIVALENT
 ON ALL FASTENERS USED TO RETAIN WEAR PLATES.

THIS IS A CUSTOM FIT CAM, COMPONENTS NOT INTERCHANGEABLE.

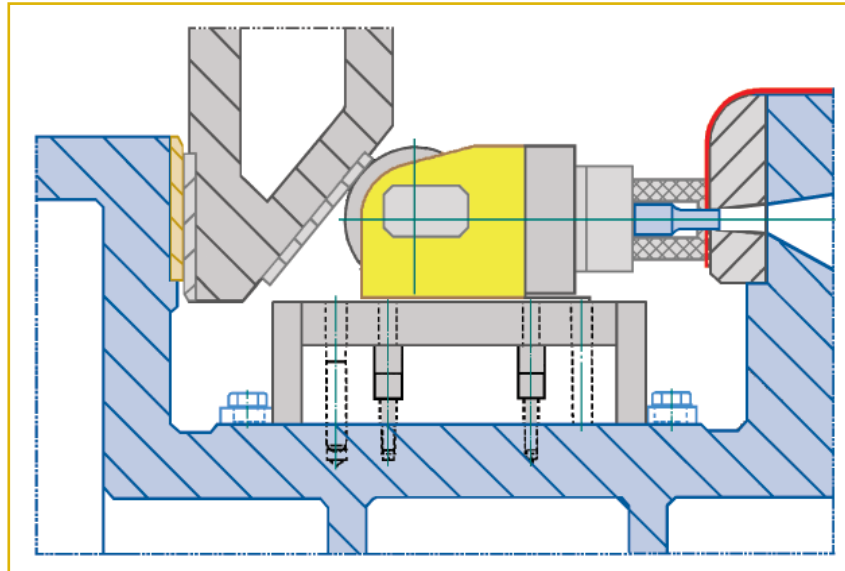
See page 12 for notes on nitrogen spring selection.

NITROGEN SPRING APPLICATION SPECIFICATIONS



FACE WIDTH	NITROGEN GAS SPRING	S=50mm	S=75mm	S=95mm
63mm	KALLER	R19-063B	R19-080B	N/A
	DADCO	C.090.063B	C.090.080B	N/A
100mm 150mm 200mm	KALLER	MC3-063Y	MC3-080Y	MC3-100Y
	DADCO	C.250.063	C.250.080	C.250.100

Modifications are made to the face plate for Dadco Spring application. Dadco and Kaller springs are not interchangeable within the RollerCam. Spring length is an important consideration when replacement is needed; we recommend replacement with the original spring brand. Other brands of nitrogen springs may be requested but will be treated as a special.



Lamina RollerCam in a typical piercing application



Lamina Components

38505 Country Club Drive, Suite 100
Farmington Hills, Michigan 48331 USA

Tel: 248-489-9122, 800-652-6462

Fax: 248-553-6842, 800-406-4410

E-mail: sales@lamina.com

www.anchorlamina.com

